

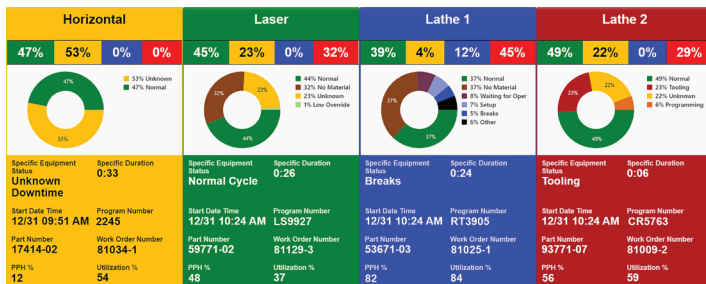
Manufacturing Dashboards

Real-Time Dashboards

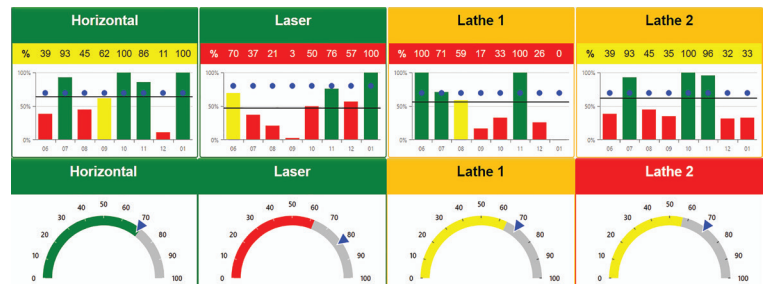
Scytec DataXchange provides multiple real-time dashboards that can be viewed on TVs, display boards, PCs, tablets, and mobile devices. While many dashboard views are built into the application, end users can create their own personal views with an unlimited combination of charts, grids, lists, trends, and shop floor layouts making the dashboard infinitely expandable. In addition to all the flexibility of the built-in views, the DataXchange dashboards provide the ability to display notifications as well as view external systems side-by-side with live production data, expanding the system to be a true shop floor communication system.

Modern Manufacturing Needs

The impact of stoppages, change overs, unplanned downtimes, and other problems, without visibility, risks extending the downtime longer than it should be. Real-time manufacturing dashboards mitigate these problems by displaying key metrics as well as summary and detailed information immediately to shop floor personnel as well as to the management team. Manufacturing dashboards serve as a visual communication tool, turning machine data into actionable information. Dashboards must be real-time as well as having the capability of showing historical information for comparison purposes. Flexibility, expandability, and customization by each user is critical for success knowing that the use of data will evolve over time. The multiple dashboards DataXchange provides is the key to visualizing the data you need today, as well as growing with the system over time.



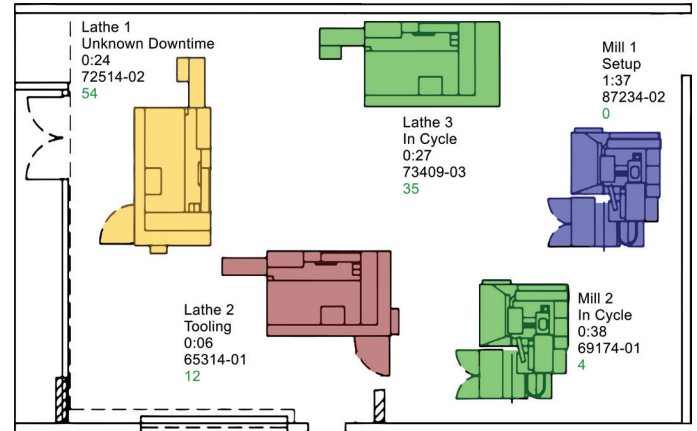
Machine Summary and Detail



Shift or Hourly Utilization

Visual Manufacturing

Managing by fact rather than hearsay or guesswork is the basis to identifying shop floor problems, resulting in less downtime, increased utilization, better quality, as well as countless other benefits. Real-time data gathered automatically from equipment, input from operators, as well as shift and job-based summary information displayed on TV screens throughout the manufacturing facility provides the information needed for the entire shop floor to communicate and work as a team.



Shop Floor Layout in RTV

The Benefits of Manufacturing Dashboards

Dashboards that provide real-time manufacturing information to staff at all levels, from operators to upper management, are imperative because the information presented on the dashboards enables all stakeholders to gain a greater understanding of the business. In terms of benefits, the number one thing to do with data from a machine monitoring system to get value, is to expose the data to everyone.

- Accurate data shared with all shop floor personnel levels.
- Improved communication.
- Information silos are avoided.
- Incorporate data easily into part of your daily routine.
- Changing the culture of the shop floor.
- Clean visual presentation that can access need-to-know information.
- Encouraging teamwork.
- Eliminate bias from manually collected data.



A dashboard configured to show utilization against targets, parts per hour against targets, machines currently in a downtime, and machine alarm detail.