

Vericut CNC Machine Connect: Postcheck

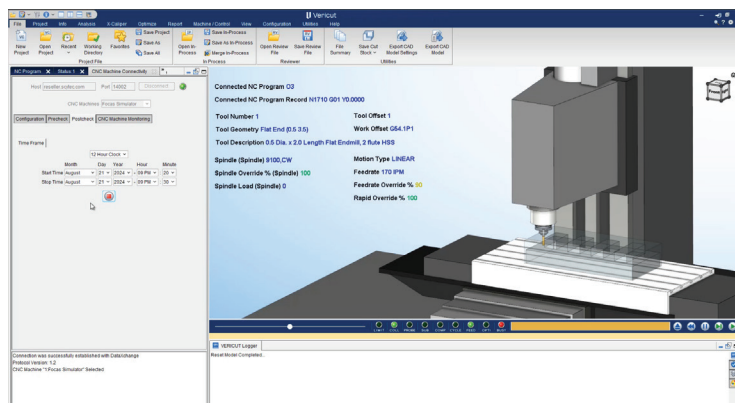
Replay Your Manufacturing Events

Every manufacturer wishes they could turn back time to prevent something unexpected from occurring. The **Postcheck** feature inside Vericut CNC Machine Connect allows you to have the next best option with the ability to digitally replay the entire operation or specific events, giving a holistic approach to simulation and verification that can utilize real-time as well as historical data. Even with the best efforts and processes such as Precheck in place, at times something still may not go as expected during a part run. Maybe there was an alarm on a machine, or a setting was changed after the job started, or possibly the CNC program could have been modified.

The Postcheck process allows you to use Vericut to see production events that are of interest, for example, if or when the following events took place...

- Tool offset adjustments.
- Spindle speeds used during production.
- The mode of your CNC.
- Stoppages due to M0, M1, M60 and feedholds.
- Work offsets were changed.
- Feedrate, rapid spindle overrides were altered.
- More

These events can be selected, and the machine activity can be played back in Vericut as if it were running in real-time, allowing you to see exactly what took place. The CNC Machine Monitoring and Postcheck features in Vericut are perfectly paired together and cater to manufacturers in pursuit of the best digital twin possible.



A time frame is selected with the Postcheck module inside the Vericut user interface that will then replay the production events