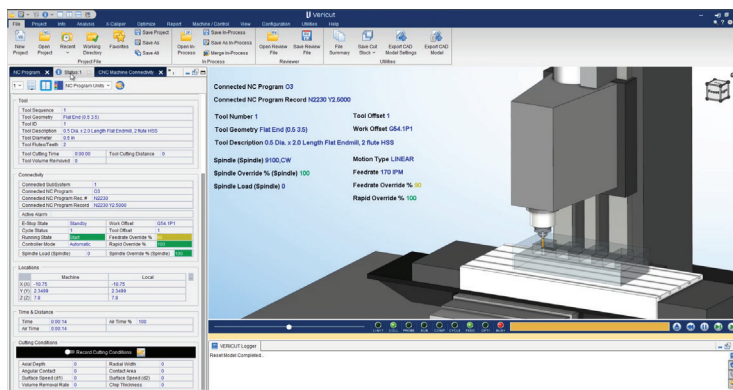


CNC Machine Connect: CNC Machine Monitoring

Live-Stream the Production Process

Establish a live connection to your CNC Machines from within Vericut by using Scytec DataXchange. **Vericut CNC Machine Monitoring** is part of CNC Machine Connect functionality that brings true digital twin capabilities to reality with live-streaming data from the Scytec DataXchange machine monitoring platform. Driven by the actual CNC machine data points for end users to see exactly what their machines are doing, from within Vericut, whether shop floor experts are onsite or not. When you are not able to observe your CNC machine by standing next to it, find answers to questions like the following...

- Is my machine running?
- Which part and NC program or subroutine is currently running?
- What cutting tool is currently loaded and what active work offset is loaded?
- Is the machine running at 100% or has an override been adjusted?
- If my machine is stopped and why (emergency stop)?
- What is going on the inside of machine if coolant is blocking the view?
- Active alarms and much more.



Monitored information can be viewed via Vericut's status window or HUD

Use Vericut CNC Machine Connect: CNC Machine Monitoring to view past the machine enclosure, guards, flying chips, and splashing coolant to see where the tool is cutting. Vericut CNC Machine Monitoring enables users to observe how the machine is functioning live as it is happening on the shop floor. CNC Machine Monitoring continually updates the connected Vericut session with the CNC machine's axis positions, cutting tool in use, active tool and work offsets, and a wealth of information about how the machine is behaving and performing.